

Pioneering for You

**wilo**

# High efficiency solutions for Ring Section Pumps



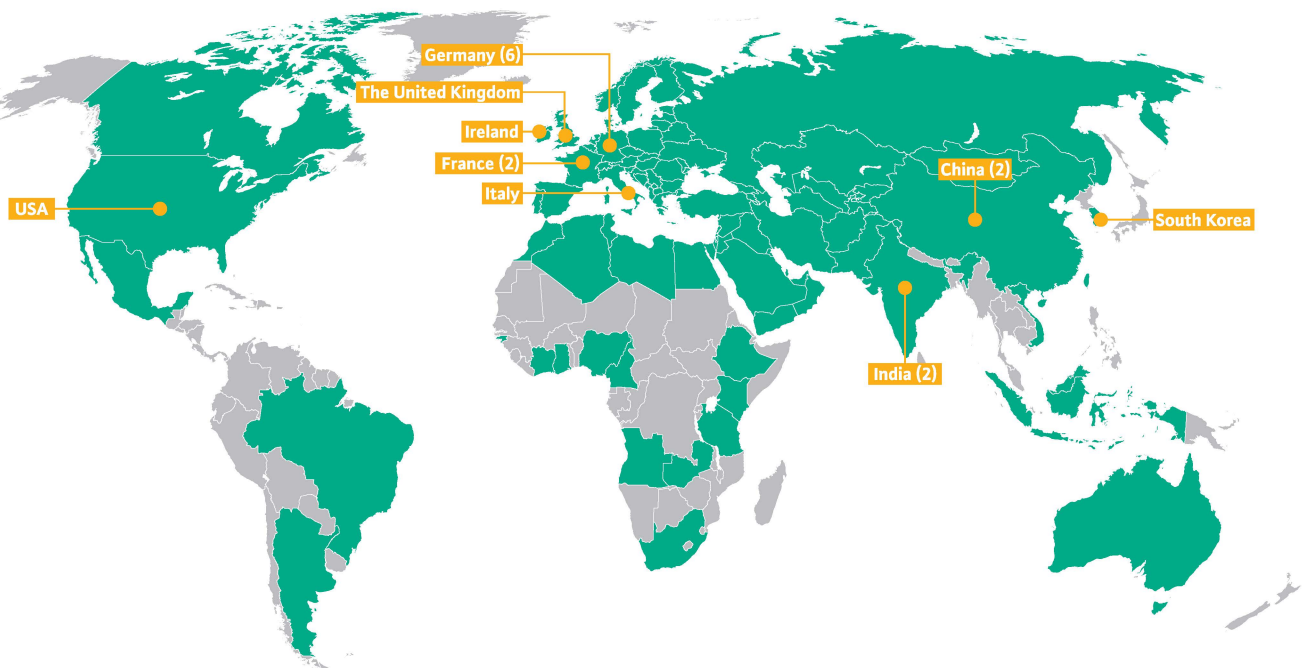
## The company at a glance


WILO SE, based in Dortmund, Germany is one of the world's leading manufacturers of pumps and pumping systems for heating, cooling and air conditioning, water supply, sewage disposal and industrial applications. With more than 15 production sites over 60 subsidiaries, and more than 7,000 employees around the world, Wilo is a true global player.

Founded in 1872 as the Louis Opländer Copper and Brass Goods Factory, the company has developed to become the leading innovator in the high-tech pump sector.



## World map with local & global presence of WILO



-  Countries in which Wilo is represented by a subsidiary
-  Countries in which Wilo have production locations



**Chinchwad, Pune Plant**

## WILO Mather and Platt Pumps Pvt. Ltd.

Mather and Platt started its Indian operations in 1913 from Kolkata, and has been fulfilling the need of water supply for more than 100 years in India for segments like building services, water management and industries.

We started our operation at Chinchwad works in Pune, Maharashtra in year 1959.

Mather and Platt Pump Ltd became part of WILO SE in the year 2005

And in year 2014, WILO Mather and Platt Pumps Ltd. Become WILO Mather and Platt Pumps Pvt. Ltd.

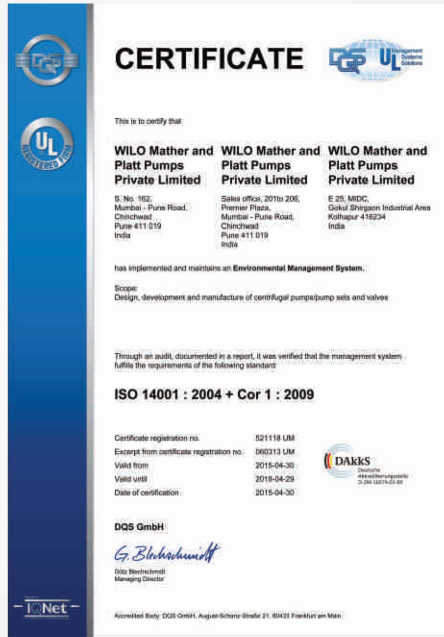
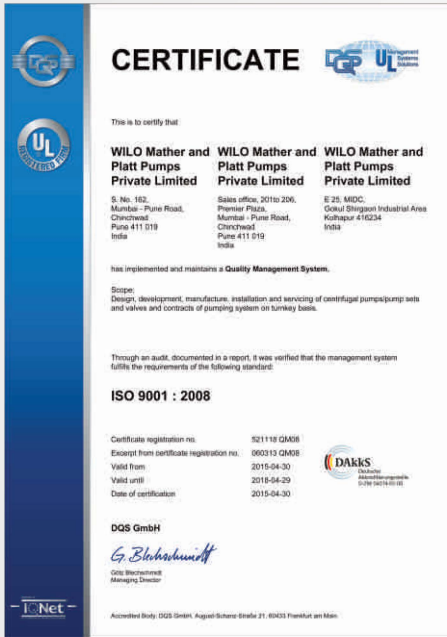
In the year 2009 a new state of art manufacturing facility covering over approx. 6000 sq. meters has been built at Kolhapur around 260 km from Pune to manufacture the latest high efficiency products of Wilo India.

The Pune & Kolhapur plants have acquired ISO 9001, ISO 14001 and OSHAS 18001 and all products are CE certified.



**Kolhapur Plant**

# ISO Certifications



# Awards

## A Green feather in the cap.....

In April 2013, our Kolhapur plant received a Gold Certification from the Indian Green Building Council (IGBC).



Not much is required for highly efficient environmental protection.

Just good ideas. Such as the idea for the high-efficiency pump which represented a milestone achievement in 2001 and the performance data which defined today's statutory limits. It requires up to 90 % less electricity than old, unregulated standard pumps.

The idea is only a good one however, if it pays off in the long term. Which is why Wilo high-efficiency pumps not only save energy, they save money too. Off every electricity bill. A small step for each one of us, but a big step for us all. Towards a better future for generations to come.



**Sustainability.**  
Today's ideas, tomorrow's standard solutions.

Deviations of 70 micrometres – a hair's breadth – are just visible to the naked eye. This is still too much tolerance for real quality and this is why our quality assurance system combines the latest measuring methods with extensive testing procedures. These include, for example, an endurance test in which our pumps run non-stop under full load. This test and the most demanding eagle-eyed technicians mean that even the smallest of flaws do not go undetected. Only products that pass our tests with flying colours are put to use in your company. Quality means that we question every aspect of our products and actions, so that you are left in peace.



**Quality.**  
This is what matters.

Flexibility is one of the most important qualities in the business world of today. Not only for the product range or service, but also spatially. Our specialists for development, quality assurance and production work in close cooperation with you when integrating our pumps in your production process. That begins with individual consulting during the planning stage, and goes far beyond installation and connection. A well-trained and worldwide active service department is another essential feature of our partnership philosophy.

We're only happy when your business runs as well as our pumps.



**Service.**  
Wherever you need us.

Paper

Paint

Food & Beverage

Power

Pharma

Ceramic

Defence

Chemical

Fertilizer

Steel

Marine

Textile

Ply Wood

Automobile

Petrochemical

Refinery

Oil & Gas

Cement

Railways

Sugar

Rubber

Metal

Mines



## Engineering Capabilities

### IDEC

Our Design & Engineering Centre [IDEC] facility in Pune, India focus on continuous research, development of products & services with state of art technologies..

Key activities carried out are as follows

- Geometric modelling
- In-house hydraulic design
- Computational fluid Dynamics [CFD]
- Finite Element Analysis [FEA]
- Sump model & Intake sump model analysis
- Stress, Torsional & Seismic analysis

Team of experts working towards development of world-class fluid pumping technology to cater growing demands from Indian & Overseas customers offering cutting edge solution with Best In Class solutions in terms of hydraulic efficiency , energy efficiency, weight to hydraulic mass ratio & structural durability



## Test Bed

Latest facility for ensuring outgoing product quality of International standards in terms of hydraulics performance, vibrations as well as noise levels.

## Facility & Capabilities

- Large pump Test bed for flows upto 60000 m<sup>3</sup>/hr, EOT crane capacity 60 Ton
- Standard pump test bed for end suction, Horizontal Split Case pump flow upto 30000 m<sup>3</sup>/hr
- NPSH req. testing capable for flows to 6000 m<sup>3</sup>/hr
- Full speed tests upto 4.5 Mega Watt
- All measuring equipment calibrated on a scheduled basis with traceability to International Standards
- Testing capability of a complete engine driven pump





# Expertise comes in all sizes

## Ring Section Pumps



<b>HSC Pumps</b>	: 64 models [50 Hz]
<b>Series</b>	: RN, IPB, PJ, HS, PLURO, MT,FG
<b>Nominal Sizes</b>	: DN 32 mm up to DN 250 mm
<b>Flow Range</b>	: up to 1500 m <sup>3</sup> /hr
<b>Head Range</b>	: up to 900 m
<b>Stage</b>	: 2 to 15
<b>Operating Pressure</b>	: 10, 12 bar
<b>Operating Temperature*</b>	: 0°C to 105°C for Gland Packed 0°C to 120°C for Mechanical Seal
<b>Mounting</b>	: Horizontal, Vertical [Optional]
<b>Lubrication</b>	: Grease , Oil [with bush Bearings]
<b>Direction of Rotation</b>	: Clockwise

\* High temperature beyond 120 °C on request  
Please contact WMPPL for 60 Hz application

### Material Of Construction\*

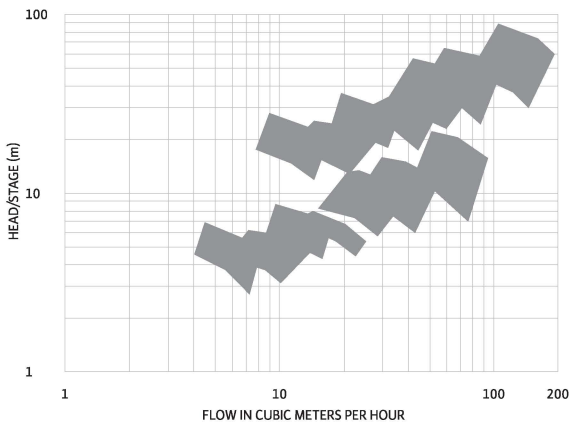
<b>Casing</b>	: Cast Iron, Stainless Steel, Ni-CI, Cast Steel, Duplex, Super Duplex
<b>Impeller</b>	: Cast Iron, Bronze Stainless Steel, Ni-CI, Cast steel, Duplex, Super Duplex
<b>Shaft</b>	: Stainless Steel [EN8, SS 316,SS 410]
<b>Shaft Sleeve</b>	: Stainless Steel [SS316,SS 410]
<b>Casing Wear ring</b>	: Cast Iron, Bronze Stainless Steel, Ni-CI

\* Pump with other material combinations available on request

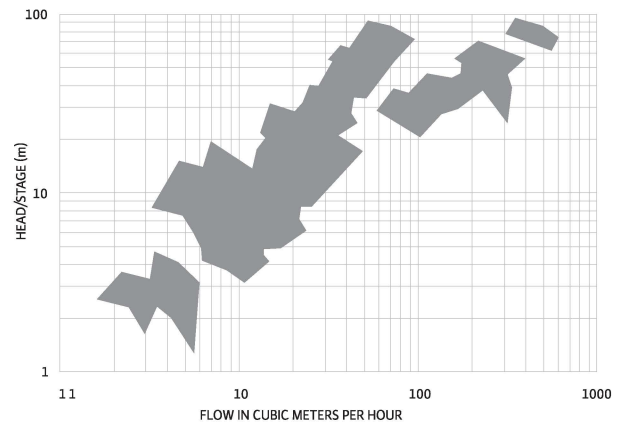
### Applications

- Utility & general water services
- Circulating water system
- Boiler Feed
- Desalination
- High Pressure application

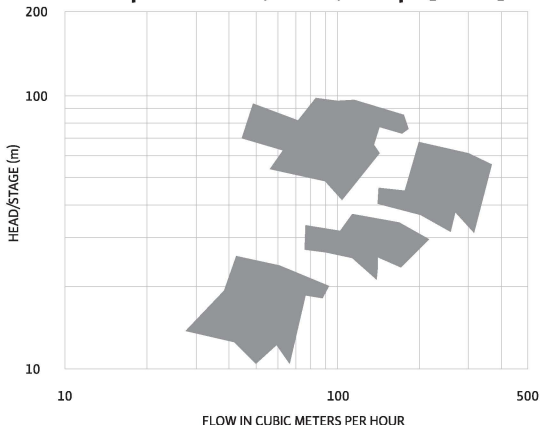
### Ring Section Pumps – RN Pumps [50 Hz]



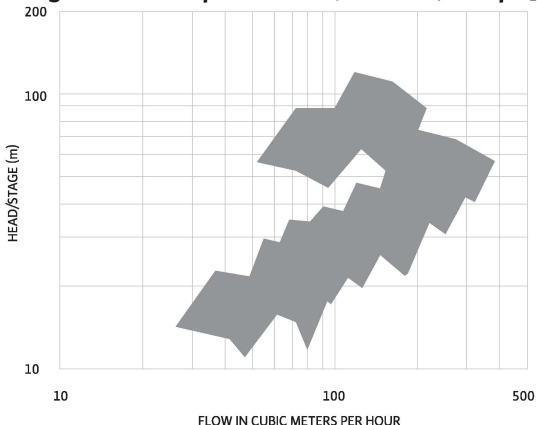
### Ring Section Pumps – HS PLURO, IPB, FG Pumps [50 Hz]



### Ring Section Pumps – PLURO (Stable) Pumps [50 Hz]



### Ring Section Pumps – PLURO (Unstable) Pumps [50 Hz]



---

## Product Variants



### Suction Discharge Orientation

Ring Section pumps can be offered with different combination of Suction & Discharge side orientations like: Both Side, Both Top, Side Suction–Top Discharge

### Design Features

- Thrust Balancing  
Axial thrust is balanced by balance holes [RN32], back vanes [RN40] in smaller pumps & for bigger pumps [above DN80] balance valves are used
- Replaceable casing wear rings
- Sealing
  - Packed Gland
  - Mechanical seal
- Bearings:  
Grease lubricated bearing are provided for RN pumps while for other series depending on requirement, pump are supplied with Anti-friction bearing or Oil lubricated Bush/Sleeve bearings
- Pump Flanges  
Flanges are per ANSI/BS standards [others on request]

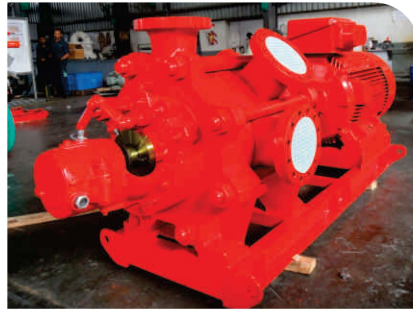
### Special Executions:

#### Centre Line Suspension:

- For high temperature applications
- Working fluid temperature between 120°C to 160°C
- Designed to withstand thermal expansion



[on request]



### Multistage Multi-Outlet

To cater different head requirements with single pump, Ring section can be offered with Multi-outlet option

### Vertical Execution:

- Allows effective utilisation of space.
- Easy maintenance of prime mover at an accessible area
- Can be supplied with vertical extended shaft, for submersible application & with canister [on request]

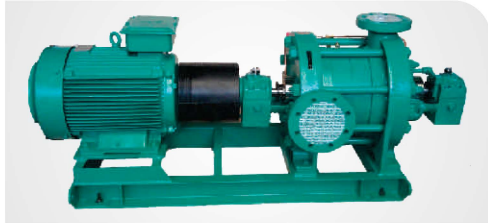
---

## Product Features

- Customised solution to meet exact requirements
- All pumps comes with shaft sleeve to ensure longer shaft life
- Optimum NPSHreq.
- Low Noise & vibration
- Less environmental impact

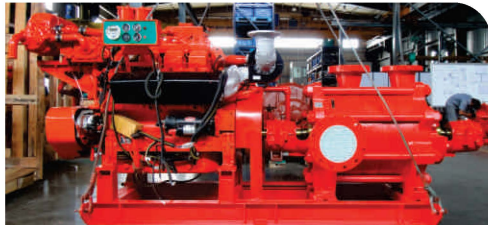
## Prime Mover

- Ring Section Pumps can be driven with :  
**Electric motor:**  
Pump are supplied with motors confirming to IE1/IE2/IE3 standards/NEMA norms, IP 55 protection class, High Voltage motors in TEFC/CACA/CACW designs & other customised design on request



### Diesel Engine:

With Radiator cooled/Heat exchanger cooled options as per the requirement



Steam Turbine with gear box or cardan shaft

## Product Certifications & Approvals

- All ring section pumps are certified with  
CE  
EAC [for Russia]



SB\_Intl. Sls.\_Ring Section\_00\_A4\_020316\_E

Pioneering for You

**WILO Mather and Platt Pumps Pvt. Ltd.**

**Pune International Sales:**

Mumbai Pune Road,  
Chinchwad, Pune – 411 019.  
Maharashtra (India)

T +91 20 27442100

F +91 20 27442111

Service Toll Free: 1800 266 8866

[www.matherplatt.com](http://www.matherplatt.com) / [www.wilo.in](http://www.wilo.in)  
[export@matherplatt.com](mailto:export@matherplatt.com)

[www.facebook.com/WiloIndia](https://www.facebook.com/WiloIndia)